

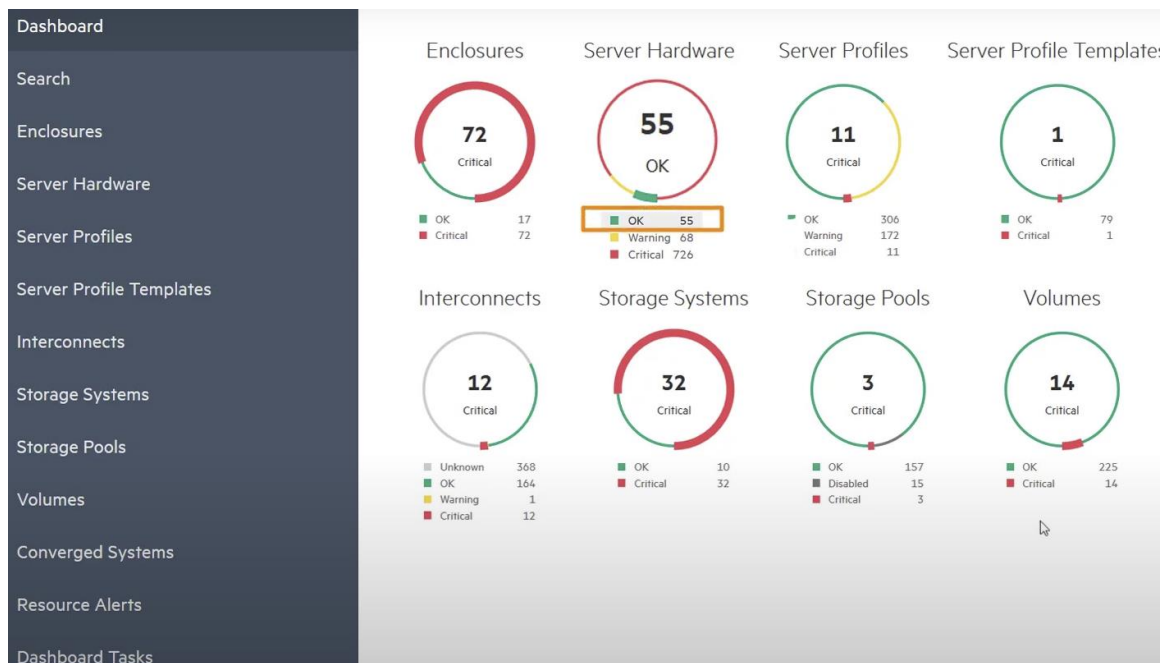
To check the health of a server monitored by HPE OneView, you can follow these steps:

1. **Log in to HPE OneView:**

- Open a web browser and navigate to the HPE OneView web interface.
- Log in with your credentials.

2. **Navigate to Server Hardware:**

- In the HPE OneView dashboard, locate and click on the "Server Hardware" tab or section.

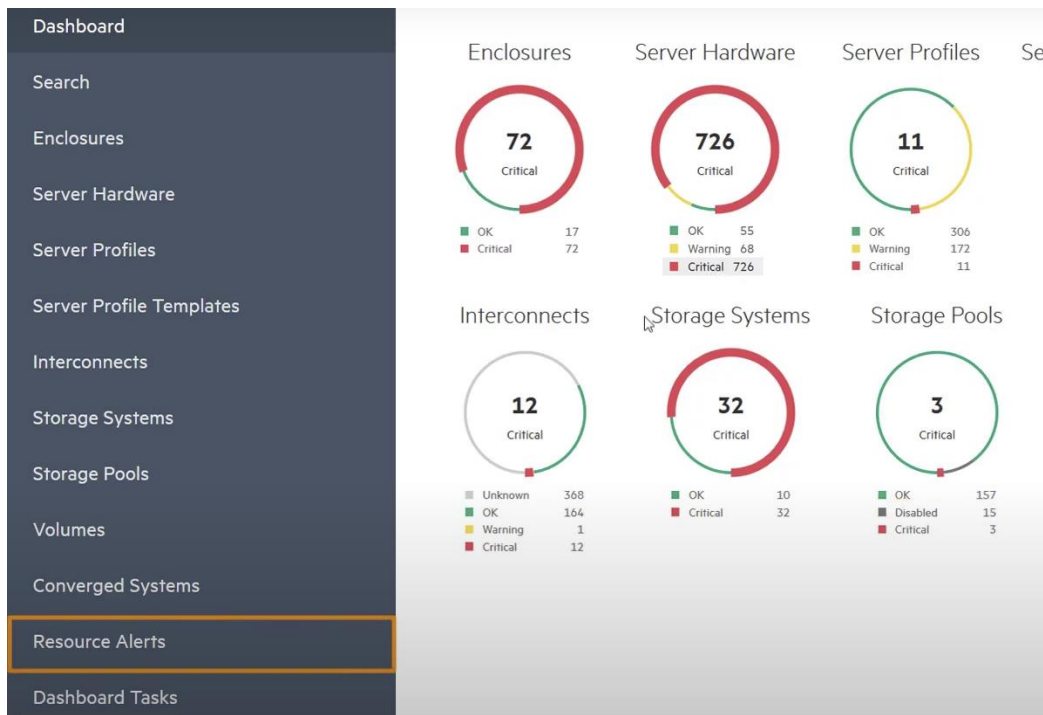


3. **Select the Server:**

- From the list of servers displayed, identify the server whose health you want to check.
- Click on the server's name or identifier to view its details.

4. **View Server Health Status:**

- Within the server details page, look for the health status or health indicator of the server.
- Typically, HPE OneView will display the health status prominently, often using color-coded indicators (e.g., green for healthy, yellow for warning, red for critical).
- Additionally, you may see specific health metrics or alerts associated with the server, indicating any issues or concerns that need attention.



## 5. Review Health Details:

- Explore the health details and diagnostic information provided by HPE OneView.
- Look for any error messages, warnings, or critical alerts that may indicate potential problems with the server hardware, firmware, or configuration.

**Resource Alerts** 33 matches out of 70

Resource Name	Type	Occurred ▲	Appliance	Model	State
BL460c Gen9 1 Template 6KBZUQ	server-profile-templates	→ Aug 14, 2020 11:52 AM (UTC)	kae-ov-5	HPE OneView VM - VMware vSphere	Locked 5.30.00-0420725

## 6. Investigate Alerts:

- If there are any alerts or warnings associated with the server, click on them to view more details.
- Investigate the root cause of the alerts and take appropriate actions to address them. This may involve troubleshooting hardware issues, updating firmware, or adjusting server configurations.

Server Profile Templates 16

+ Create server profile template

Name
BL460c G7 1 Template 6Z5754
BL460c G7 1 Template VPDTX0
BL460c Gen8 1 Template VU7YJ6
BL460c Gen8 1 Template Z43Y7Q
BL460c Gen9 1 Template 6KBZUQ
BL460c Gen9 1 Template UNRYCE
BL460c Gen10 1 Template EQ0T5X
BL460c Gen10 1 Template EYXLHW
BL460c Gen10 2 Template NADAZV
BL460c Gen10 2 Template W2KLTV
BL465c Gen8 1 Template KR58XB
BL465c Gen8 1 Template WK24VU
BL660c Gen8 1 Template 2A4A23
BL660c Gen8 1 Template Q66PG7

**BL460c Gen9 1 Template 6KBZUQ** Overview

The firmware baseline Service Pack for ProLiant version 2018.06.0 has been removed. Locked

**General** [Edit](#)

Description BL460c Gen9 1 Template 6KBZUQ Desc

Server profile description not set

Server hardware type BL460c Gen9 1

Enclosure group eg-0H23

Affinity Device bay

Connections managed manually

SAN volume attachments managed manually

Logical drives 0

Logical JBODs 0

Firmware baseline Service Pack for ProLiant version 2018.06.0 (removed)

BIOS managed manually

iLO Settings managed manually

**Server Profiles** 0

No server profiles

**General**

Name BL460c Gen9 1 Template 6

Description BL460c Gen9 1 Template 6KBZUQ Desc

**Server Profile**

Server profile description

Server hardware type BL460c Gen9 1 [Change](#)

Enclosure group eg-0H23 [Change](#)

Affinity Device bay

**Firmware**

Firmware baseline Service Pack for ProLiant version 2018.06.0

Selected firmware bundle has been removed.  
Select a different bundle.

☐ Force installation

## 7. Perform Remediation:

- Based on the health status and alerts identified, take necessary steps to remediate any issues affecting the server's health.
- This might involve performing maintenance tasks, applying firmware updates, replacing faulty components, or adjusting configurations as recommended by HPE OneView.

Server Profile Templates 16

+ Create server profile template

Name
BL460c G7 1 Template 6Z5754
BL460c G7 1 Template VPDTX0
BL460c Gen8 1 Template VU7YJ6
BL460c Gen8 1 Template Z43Y7Q
BL460c Gen9 1 Template 6KBZUQ
BL460c Gen9 1 Template UNRYCE
BL460c Gen10 1 Template EQ0TSX
BL460c Gen10 1 Template EYXLHW
BL460c Gen10 2 Template NADAZY
BL460c Gen10 2 Template W2KLTV
BL465c Gen8 1 Template KR58XB
BL465c Gen8 1 Template WK24VU
BL660c Gen8 1 Template 2A4A23

BL460c Gen9 1 Template 6KBZUQ Overview

Update Completed

**General** > Edit

Description	BL460c Gen9 1 Template 6KBZUQ Desc
Server profile description	not set
Server hardware type	BL460c Gen9 1
Enclosure group	eg-0H23
Affinity	Device bay
Connections	managed manually
SAN volume attachments	managed manually
Logical drives	0
Logical JBODs	0
Firmware baseline	—
BIOS	managed manually
iLO Settings	managed manually

## 8. Monitor Ongoing Health:

- After addressing any identified issues, continue to monitor the server's health status over time.
- Regularly check for new alerts or changes in health status to ensure the server remains in optimal condition and to proactively address any emerging issues.